

Rose Rosette Disease (RRD) Prevention

MITICIDE SPRAY PROGRAM:

- Spray every 10–14 days, bud break through October.
- Chemicals that are approved for the eriophyid mite (**please use rates as specified on label by manufacturer**):
 - Kontos
 - Akari
 - Savate

OTHER CULTURAL PRACTICES TO HELP PREVENT RRD:

- Cut back overwintered plants before they break and apply dormant oil.
- Scout plants weekly, looking for symptoms.
- Discard any plants showing symptoms of RRD in plastic bags and throw in the trash.
- Do *not* burn the removed plants, as burning will disseminate the mite.

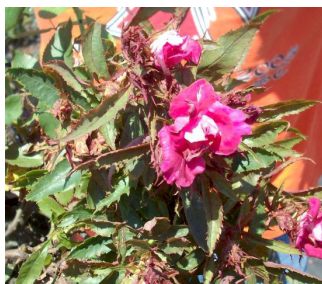
SYMPTOMS OF INFECTION:



Red, elongated stem growth



Excessive thorniness



Deformed flowers



“Witch’s broom” cluster

This document does not represent an endorsement of the chemicals listed above.

Star® Roses and Plants is committed to combating RRD. Our company is funding and coordinating research on many different levels with in-house specialists, various industry professionals, and universities across the country.